
Ether and Chloroform

Flagg John Foster

Title: Ether and Chloroform

Author: Flagg John Foster

This is an exact replica of a book. The book reprint was manually improved by a team of professionals, as opposed to automatic/OCR processes used by some companies. However, the book may still have imperfections such as missing pages, poor pictures, errant marks, etc. that were a part of the original text. We appreciate your understanding of the imperfections which can not be improved, and hope you will enjoy reading this book.









ETHER AND CHLOROFORM:

THEIR EMPLOYMENT

IN

SURGERY, DENTISTRY, MIDWIFERY,
THERAPEUTICS, ETC.

LANE LIBRARY

J. F. B. FLAGG, M. D.,

SURGEON DENTIST,

MEMBER OF THE RHODE ISLAND MEDICAL SOCIETY.



PHILADELPHIA:
LINDSAY AND BLAKISTON.

1851.

Ka

Entered, according to Act of Congress, in the year 1857,
BY LINDSAY AND BLACKISTON,

In the Clerk's Office of the District Court for the Eastern District of
Pennsylvania.

C. SHERMAN, PRINTER.

M81
F56
1851

TO

JOSIAH F. FLAGG, M.D.,

SURGEON DENTIST,

BOSTON, MASSACHUSETTS.

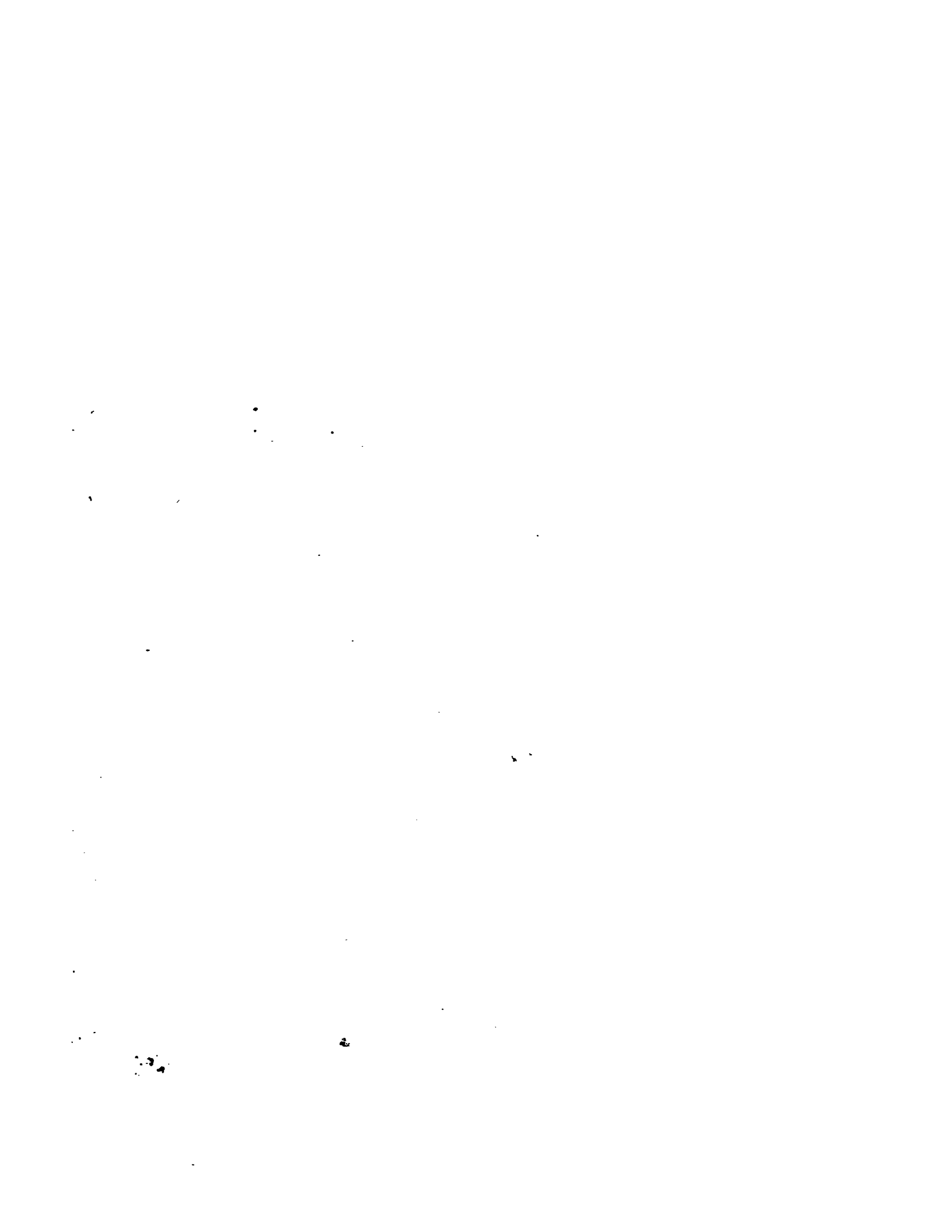
As I know of no one who will peruse the following pages with greater leniency, or with a more just appreciation of my motive for giving them publicity,—I would therefore respectfully inscribe them to you, with my sincere thanks for the independent course manifested by yourself at the commencement of Ether inhalation in your city.

In the earnest wish for your long-continued health and usefulness, believe me,

Truly your affectionate brother,

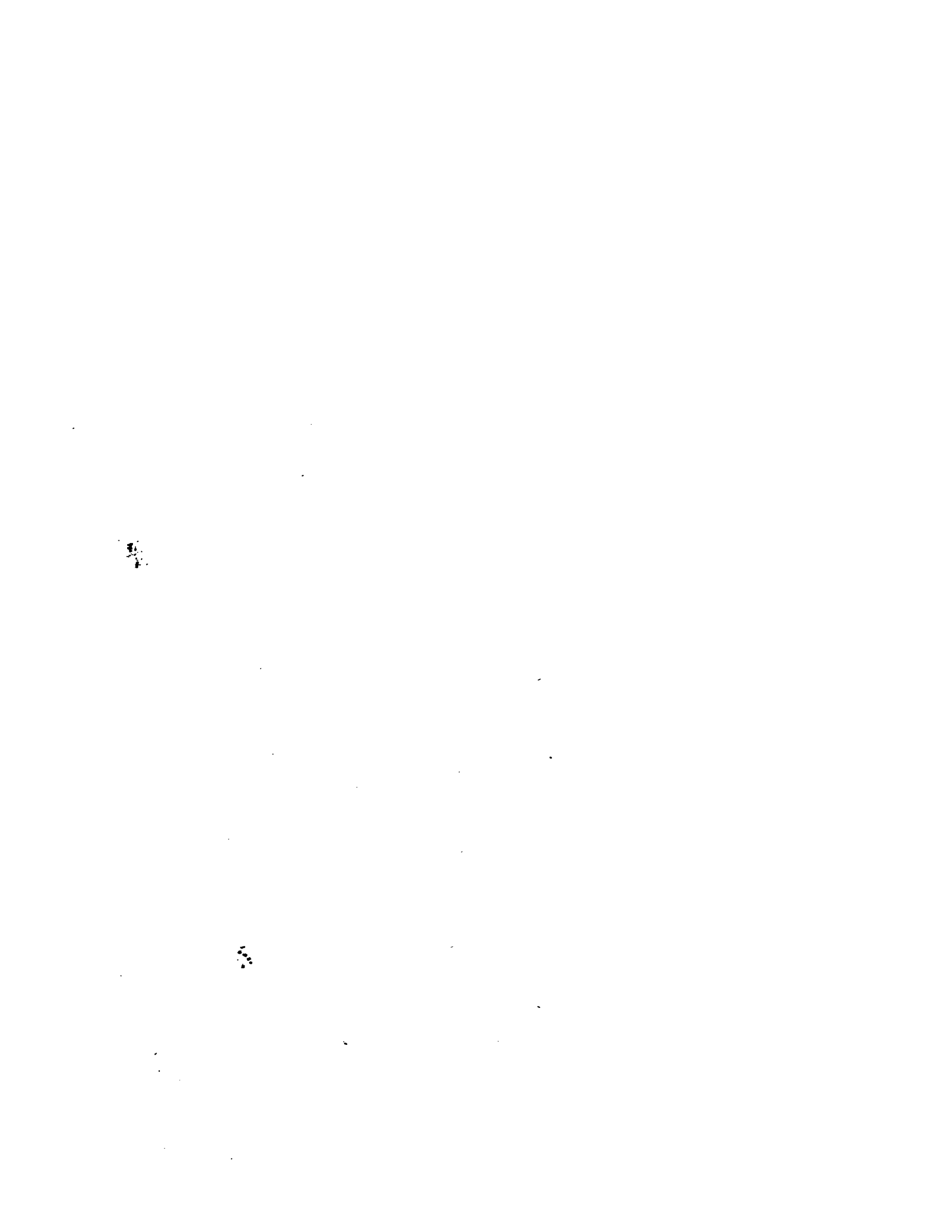
J. F. B. FLAGG.

190 Arch Street, Philadelphia.
December, 1850.



CONTENTS.

	PAGE
INTRODUCTION, - - - - -	7
OXIDE OF ETHYL, OR ETHER, - - - - -	18
CHLOROFORM, ITS CHEMICAL CONSTITUTION, - - - - -	18
ETHER, REVIEW OF THE HISTORY OF ITS INHALATION, - - - - -	19
GENERAL DIRECTIONS FOR ADMINISTERING ETHER, ETC., - - - - -	48
PHYSIOLOGICAL EFFECTS OF SULPHURIC ETHER, - - - - -	48
SULPHURIC ETHER IN SURGERY, - - - - -	61
PATHOLOGY, CONSIDERED IN CONNECTION WITH ETHER IN- HALATION, - - - - -	54
DIAGNOSIS, ASSISTED BY THE ETHER INHALATION, - - - - -	80
NEUROLOGY, NEW THEORY SUGGESTED, ETC., - - - - -	88
PSYCHOLOGY, IN CONNECTION WITH ETHER INHALATION, - - - - -	95
CHLOROFORM, AS A LOCAL ANÆSTHESIA, - - - - -	119
ANÆSTHESIA IN MIDWIFERY, - - - - -	128
CORRESPONDENCE IN RELATION TO THE EFFICACY OF ETHER AND CHLOROFORM, - - - - -	142
MISCELLANEOUS CASES, - - - - -	164
SULPHURIC ETHER, UNFAVOURABLE IMPRESSIONS IN REGARD TO ITS USE, - - - - -	177
CONCLUSION, - - - - -	181



INTRODUCTION.

THE excitement, consequent upon the discovery of the application of sulphuric ether in painful surgical operations, having passed sufficiently away to enable us more calmly to view and understand its real merits, I cannot but feel it a pleasurable duty, on my part, to lay before the community those facts and circumstances in reference to the subject, which my position has enabled me to collect.

In treating upon its history as a discovery, I would here observe, that I have no other interest or feeling in the matter, than what I believe to be a desire to elicit truth; making statements, or repeating such as may have reached me, with no further comment than the case seems absolutely to require; preferring that my readers should draw their deductions, and form conclusions from simple relation, rather than from party prejudice.

It is much to be regretted, that several candidates should have appeared simultaneously for the exclu-