
**A Manual for the Study of the Sepulchral Slabs and
Crosses of the Middle Ages**

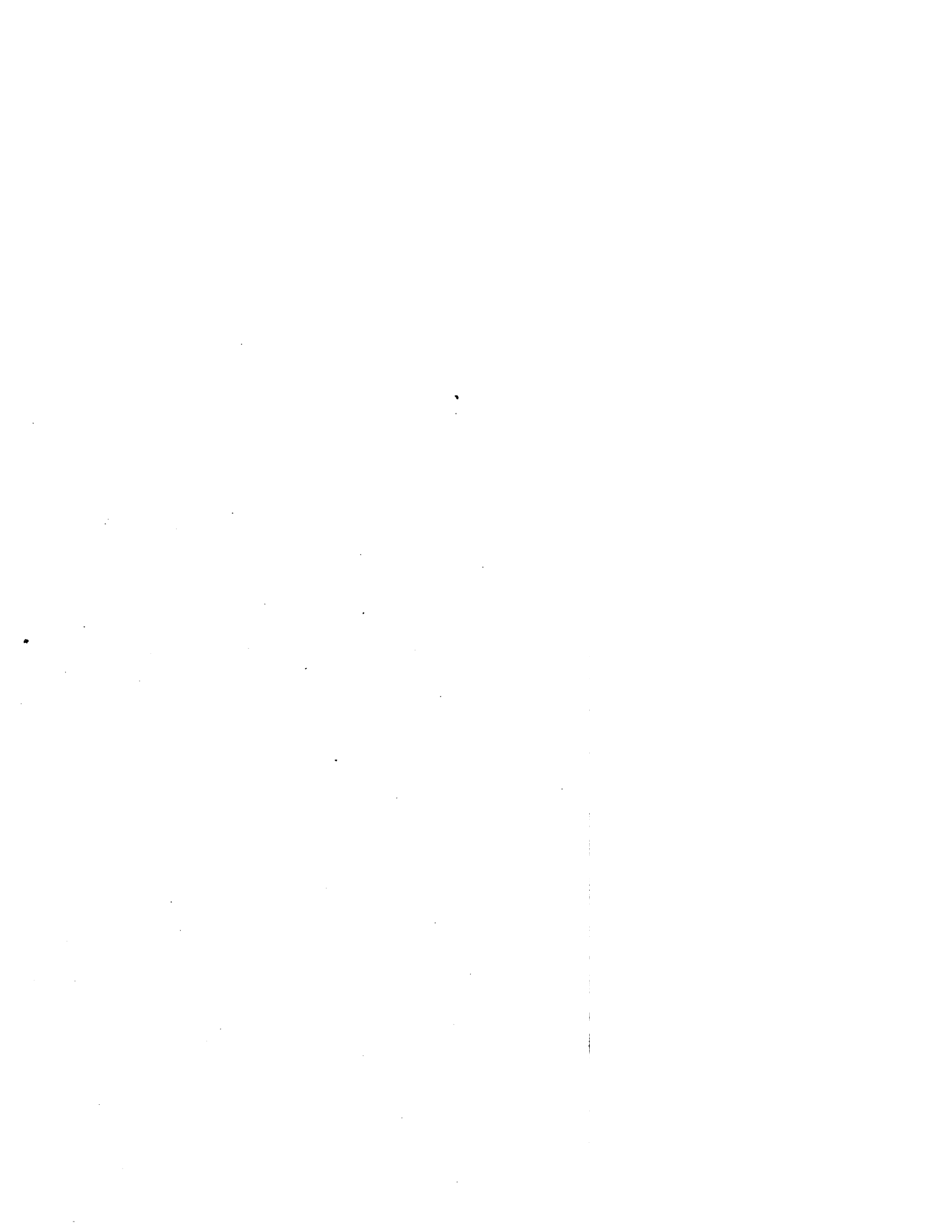
Cutts Edward Lewes

Title: A Manual for the Study of the Sepulchral Slabs and Crosses of the Middle Ages

Author: Cutts Edward Lewes

This is an exact replica of a book. The book reprint was manually improved by a team of professionals, as opposed to automatic/OCR processes used by some companies. However, the book may still have imperfections such as missing pages, poor pictures, errant marks, etc. that were a part of the original text. We appreciate your understanding of the imperfections which can not be improved, and hope you will enjoy reading this book.





ARCHAEOLOGICAL MANUALS,

PUBLISHED UNDER THE SANCTION

OF THE CENTRAL COMMITTEE

OF THE

Archaeological Institute of Great Britain and Ireland.

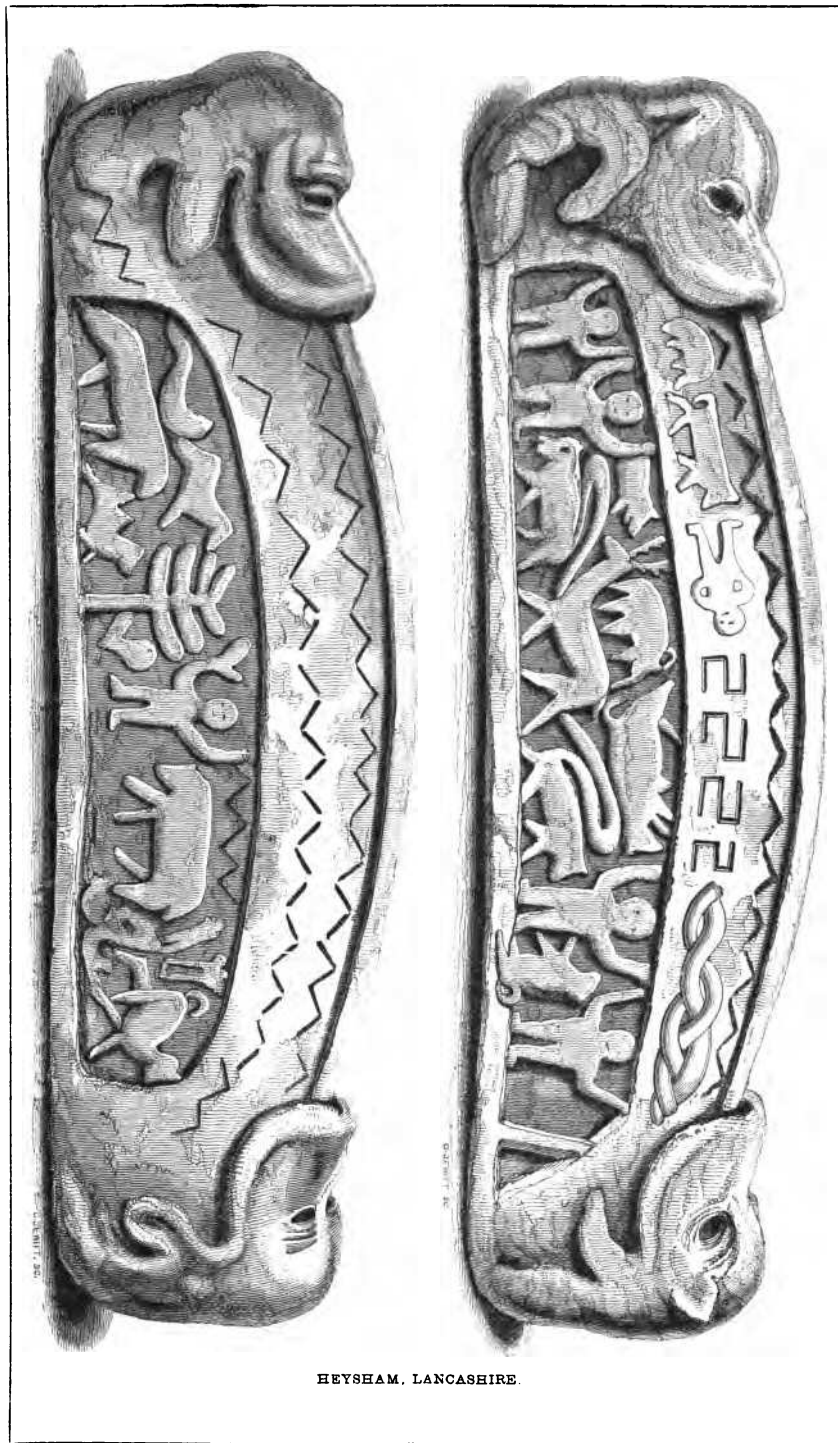
SEPULCHRAL SLABS AND CROSSES,

BEING THE FIRST PORTION OF THE SUBJECT OF

MONUMENTAL ANTIQUITIES.

547204

In recommending the following work to the Members of the Institute, and Archæologists in general, as the result of the most systematic and detailed enquiry hitherto bestowed upon an interesting and neglected branch of Sepulchral Antiquities, the Central Committee desire that it should be understood, that they must not be held responsible for any statements or opinions expressed in this treatise, the Author alone being answerable for the same.



HEYSHAM, LANCASHIRE.

A
M A N U A L
FOR
THE STUDY
OF
The Sepulchral Slabs
AND
Crosses
OF
THE MIDDLE AGES.

BY THE
REV. EDWARD L. CUTTS, B.A.

LONDON,
JOHN HENRY PARKER,
377, STRAND; AND BROAD STREET, OXFORD.

M DCCC XLIX.

Jan. 1917
SCHOOL OF ARCHITECTURE
HARVARD UNIVERSITY
(Francis Bond Collection)

35577

Union
T₁
NB
1585
C 963
Sepulchral monuments AB
Sculpture, medieval
R.H. of G.B. I

OXFORD:
PRINTED BY I. SHRIMPTON.

PREFACE.

IN such a work as this, accuracy in the engraved examples is of primary importance, and care has been taken to secure this as far as possible: the author is answerable for the accuracy of those marked with his initials, which have been carefully reduced from the stones themselves, or from rubbings; others are from drawings and reduced rubbings by friends upon whose correctness the author could depend; some others have been taken from engravings in Gough's Sepulchral Monuments, Lysons' Magna Brittania, the Archæologia, Archæological Journal, &c., and in most of these cases the authority has been mentioned in the notes to the examples.

This branch of archæology has been hitherto much neglected, though it is a very interesting one, and the examples are much more numerous than is generally imagined; the number which has already come under the author's notice amounts nearly to one thousand: much doubtless yet remains to be done in it, and the author begs to state his intention of prosecuting this study, and earnestly solicits the assistance of antiquarian students; rubbings, accurate drawings, notices of grave-stones, or any information on the subject, will be highly acceptable and very thankfully received.

The author cannot conclude without acknowledging his obligations to many gentlemen who have kindly lent rubbings and drawings, and furnished other assistance to the work, and in an especial manner to Albert Way, Esq., M.A., I. H. Parker, Esq., Raphael Brandon, Esq., and J. C. Westwood, Esq., who have rendered much valuable assistance.

EDWARD L. CUTTS.

*Westerham, Kent,
July 10, 1849.*

CONTENTS.

	PAGE
INCISED CROSS SLABS	2
ANCIENT MODES OF INTERMENT	10
STONE COFFINS	13
SYMBOLS	28
HEAD CROSSES	47
CHRONOLOGY OF GRAVE-STONES	50
INSCRIPTIONS	56
NOTES, DESCRIPTIVE OF THE ILLUSTRATIONS	59

ILLUSTRATIONS.

FRONTISPIECE	
INCISED CROSS SLABS.	PLATES.
Prior to the twelfth century	I—III.
Twelfth century	IV—VII.
Thirteenth century	VIII—XV.
Fourteenth century	XVI—XXXIII.
Fifteenth century and after	XXIV—XXXII.
RAISED CROSS SLABS.	
Prior to the twelfth century	XXXIII—XXXV.
Twelfth century	XXXVI—XLI.
Thirteenth century	XLII—LIV.
Fourteenth century	LV—LXIV.
Fifteenth century	LXV., LXVI.
RAISED CROSS SLABS WITH HEADS AND DEMI-FIGURES.	
Thirteenth century	LXVII.
Fourteenth century	LXVIII—LXXI.
Fifteenth century and after	LXXII., LXXIII.
HEAD STONE CROSSES.	
Prior to the twelfth century	LXXV—LXXXIX.
Twelfth century	LXXX.
Thirteenth and fourteenth centuries	LXXXI.
Fifteenth century and after	LXXXII., LXXXIII.