

---

**Tom Slade with the boys  
over there**

**Fitzhugh Percy Keese**

---

**Title: Tom Slade with the boys over there**

**Author: Fitzhugh Percy Keese**

**This is an exact replica of a book. The book reprint was manually improved by a team of professionals, as opposed to automatic/OCR processes used by some companies. However, the book may still have imperfections such as missing pages, poor pictures, errant marks, etc. that were a part of the original text. We appreciate your understanding of the imperfections which can not be improved, and hope you will enjoy reading this book.**

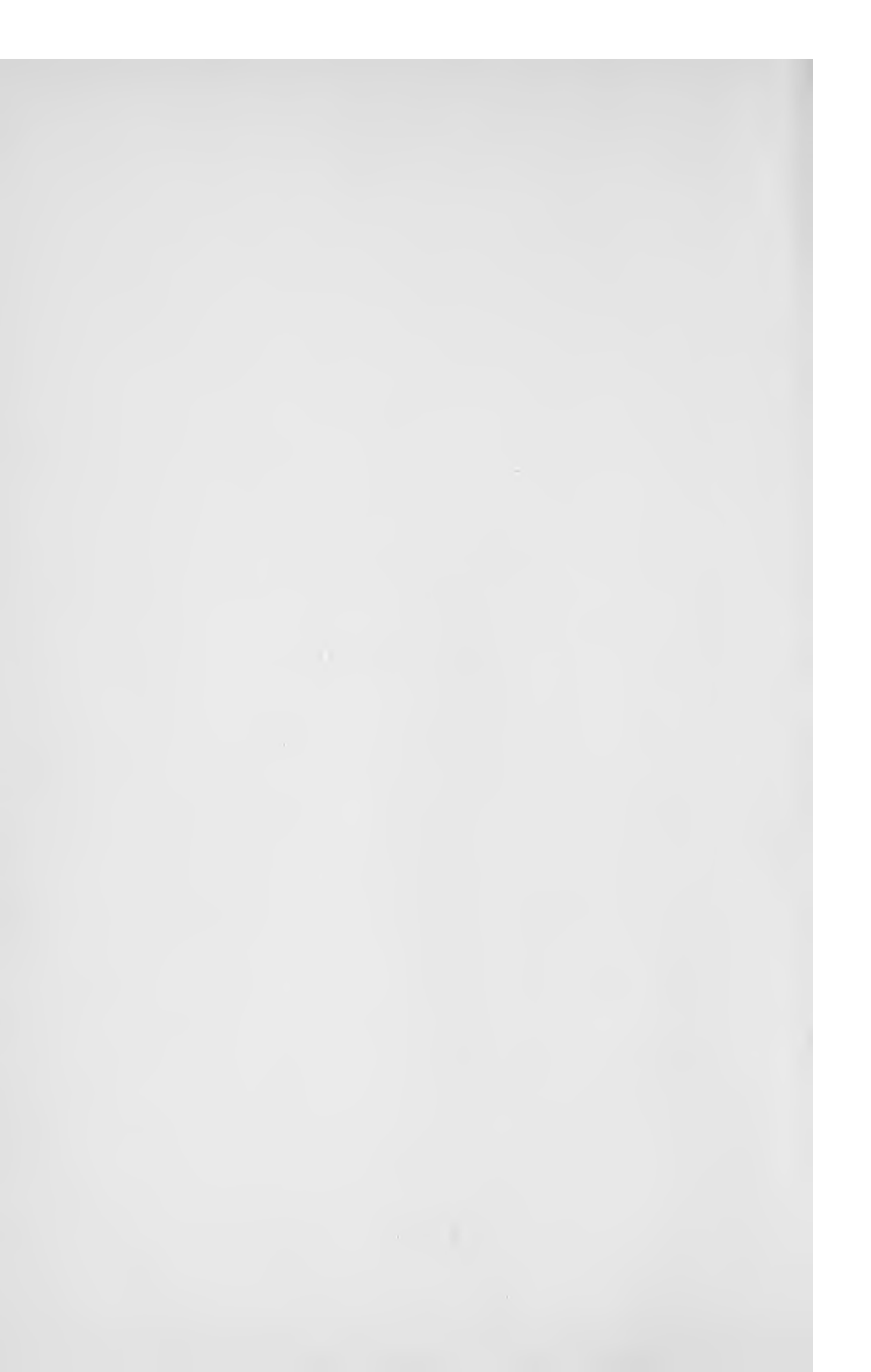


**Book Renaissance**

[www.ren-books.com](http://www.ren-books.com)

1857-1858  
1859-1860  
1861-1862

1863-1864  
1865-1866

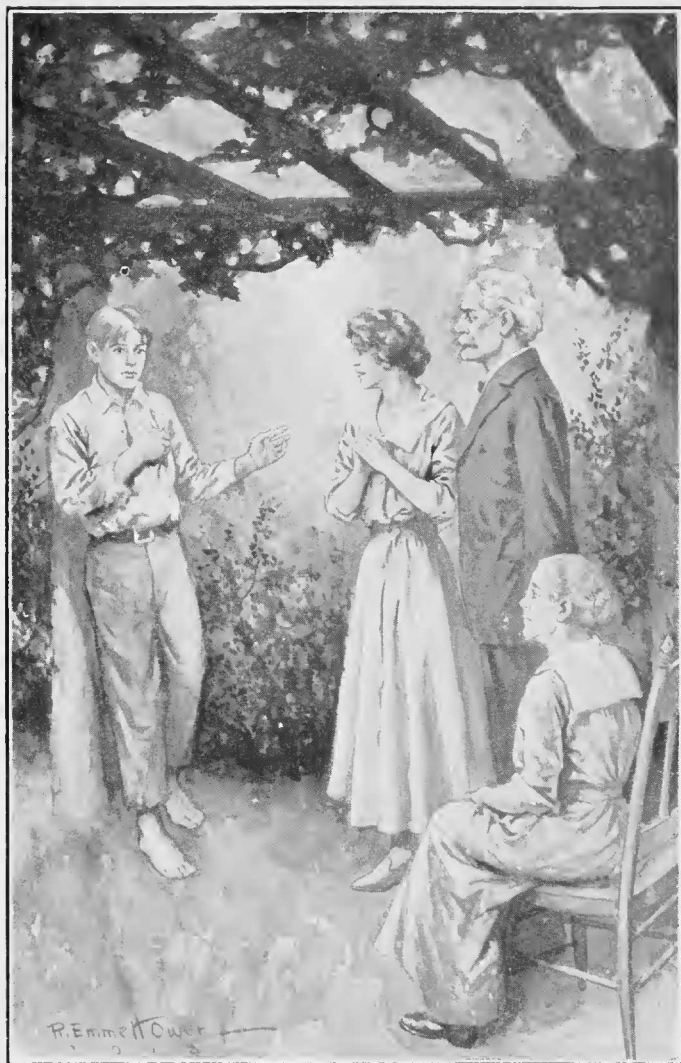


THE NEW YORK  
PUBLIC LIBRARY

ASTOR, LENOX AND  
TILDEN FOUNDATIONS

P

L



"I AM—AMERICAN. MY NAME—IS TOM SLADE."

*Frontispiece (Page 9)*

# TOM SLADE WITH THE BOYS OVER THERE

BY  
PERCY K. FITZHUGH

AUTHOR OF  
TOM SLADE, BOY SCOUT  
TOM SLADE AT TEMPLE CAMP  
TOM SLADE ON THE RIVER  
TOM SLADE ON A TRANSPORT

ILLUSTRATED BY  
R. EMMETT OWEN

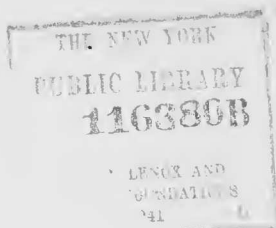
PUBLISHED WITH THE APPROVAL OF  
THE BOY SCOUTS OF AMERICA

GROSSET & DUNLAP  
PUBLISHERS : NEW YORK

Made in the United States of America

[21918]

P



Copyright, 1918, by  
GROSSET & DUNLAP



To  
F. A. O.

The real Tom Slade, whose extraordinary adventures on land and sea put these storied exploits in the shade, this book is dedicated with envious admiration.

U. D. UNIVERSITY MICH 20 1941

the 1990s, the number of children in the United States with a diagnosed mental disorder has increased by 25% (Mental Health Services Administration, 1996). The increase in the number of children with mental health problems has been accompanied by a corresponding increase in the number of children who are referred to mental health services (Mental Health Services Administration, 1996).

There are a number of reasons why the number of children with mental health problems has increased. One reason is that the diagnostic criteria for mental health problems have become more stringent over time. Another reason is that the number of children who are referred to mental health services has increased. A third reason is that the number of children who are diagnosed with mental health problems has increased.

There are a number of reasons why the number of children who are referred to mental health services has increased. One reason is that the number of children who are referred to mental health services has increased. Another reason is that the number of children who are referred to mental health services has increased. A third reason is that the number of children who are referred to mental health services has increased.

There are a number of reasons why the number of children who are referred to mental health services has increased. One reason is that the number of children who are referred to mental health services has increased. Another reason is that the number of children who are referred to mental health services has increased. A third reason is that the number of children who are referred to mental health services has increased.

There are a number of reasons why the number of children who are referred to mental health services has increased. One reason is that the number of children who are referred to mental health services has increased. Another reason is that the number of children who are referred to mental health services has increased. A third reason is that the number of children who are referred to mental health services has increased.

There are a number of reasons why the number of children who are referred to mental health services has increased. One reason is that the number of children who are referred to mental health services has increased. Another reason is that the number of children who are referred to mental health services has increased. A third reason is that the number of children who are referred to mental health services has increased.

There are a number of reasons why the number of children who are referred to mental health services has increased. One reason is that the number of children who are referred to mental health services has increased. Another reason is that the number of children who are referred to mental health services has increased. A third reason is that the number of children who are referred to mental health services has increased.

## TABLE OF CONTENTS

| CHAPTER   | PAGE |
|---|------|
| I. THE HOME IN ALSACE . . . .                                 | 1    |
| II. AN APPARITION . . . . .                                   | 5    |
| III. TOM'S STORY . . . . .                                    | 12   |
| IV. THE OLD WINE VAT . . . .                                  | 22   |
| V. THE VOICE FROM THE DISTANCE                                | 32   |
| VI. PRISONERS AGAIN . . . . .                                 | 38   |
| VII. WHERE THERE'S A WILL . .                                 | 42   |
| VIII. THE HOME FIRE NO LONGER BURNS                           | 51   |
| IX. FLIGHT . . . . .  | 58   |
| X. THE SOLDIER'S PAPERS . . . .                               | 64   |
| XI. THE SCOUT THROUGH ALSACE .                                | 72   |
| XII. THE DANCE WITH DEATH . .                                 | 79   |
| XIII. THE PRIZE SAUSAGE . . . .                               | 84   |
| XIV. A RISKY DECISION . . . . .                               | 90   |
| XV. HE WHO HAS EYES TO SEE. . .                               | 97   |
| XVI. THE WEAVER OF MERNON . .                                 | 103  |
| XVII. THE CLOUDS GATHER . . . .                               | 112  |
| XVIII. IN THE RHINE . . . . .                                 | 118  |
| XIX. TOM LOSES HIS FIRST CONFLICT<br>WITH THE ENEMY . . . . . | 124  |
| XX. A NEW DANGER . . . . .                                    | 131  |
| XXI. COMPANY . . . . .  | 137  |

## CONTENTS

| CHAPTER  | PAGE |
|--|------|
| XXII. BREAKFAST WITHOUT FOOD CARDS                   | 141  |
| XXIII. THE CATSKILL VOLCANO IN<br>ERUPTION . . . . . | 145  |
| XXIV. MILITARY ETIQUETTE . . . . .                   | 155  |
| XXV. TOM IN WONDERLAND . . . . .                     | 162  |
| XXVI. MAGIC . . . . .                                | 167  |
| XXVII. NONNENMATTWEIHER . . . . .                    | 174  |
| XXVIII. AN INVESTMENT . . . . .                      | 180  |
| XXIX. CAMOUFLAGE . . . . .                           | 184  |
| XXX. THE SPIRIT OF FRANCE . . . . .                  | 190  |
| XXXI. THE END OF THE TRAIL . . . . .                 | 196  |